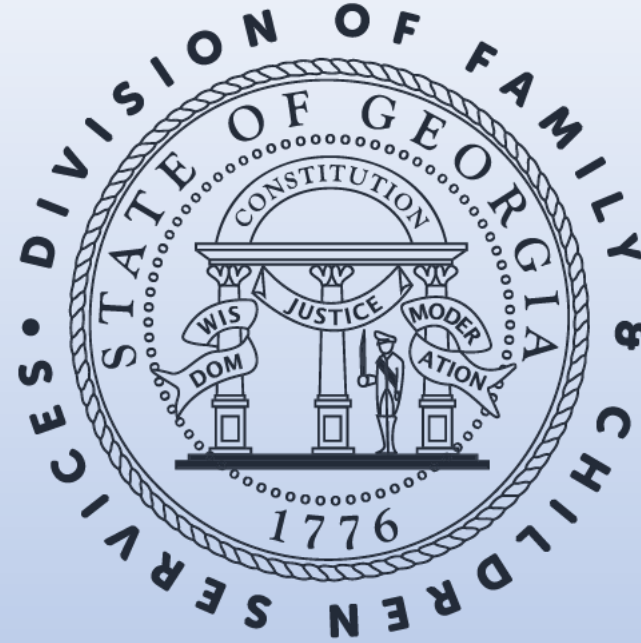




**Candice Broce**

Director



# CPA Monthly Series

OPM Resource Development

# MEET OUR *Team*

Tomeka Branscomb

[Tomeka.branscomb1@dhs.ga.gov](mailto:Tomeka.branscomb1@dhs.ga.gov)

(404) 796-5053



Angela Butts

[Angela.butts@dhs.ga.gov](mailto:Angela.butts@dhs.ga.gov)

(470) 217-7631



Blake Boyer

[Blake.Boyer@dhs.ga.gov](mailto:Blake.Boyer@dhs.ga.gov)

(706) 525-1130



Andria Bolton  
(Provider Relations Manager)

[Andria.Bolton@dhs.ga.gov](mailto:Andria.Bolton@dhs.ga.gov)

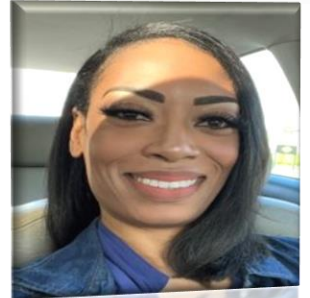
(404) 895-7135



Amy Hill

[Amy.hill1@dhs.ga.gov](mailto:Amy.hill1@dhs.ga.gov)

(478) 244-6379



Azure McCollough

[Azure.mccollough@dhs.ga.gov](mailto:Azure.mccollough@dhs.ga.gov)

(404) 463-1589



Shanise Wooten

[Shanise.wooten1@dhs.ga.gov](mailto:Shanise.wooten1@dhs.ga.gov)

(404) 548-6756



## Agenda

1. Data Overview
2. Home Availability
3. Complex Youth Placement
4. Argo - Placement Tool
5. CPS Screening Application – Follow Up
6. Reminders and Recognition



# Unapproved Re-evaluations February 2023

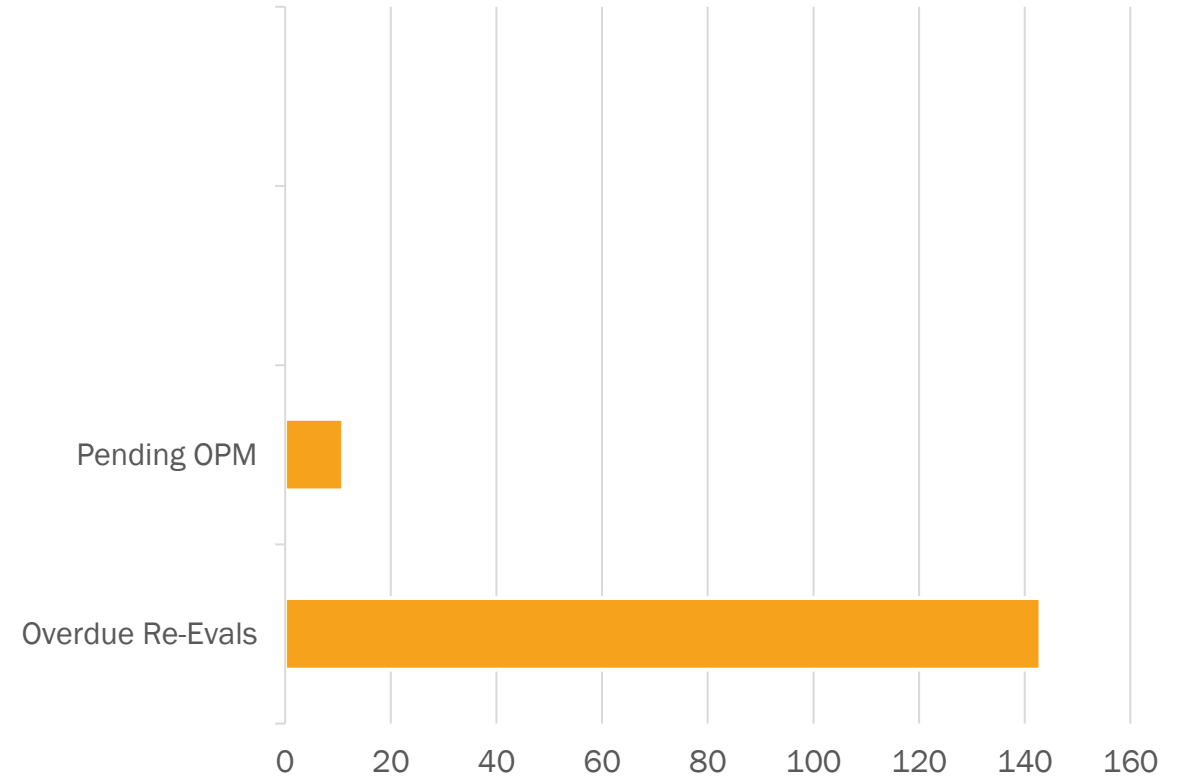
**136** Overdue Re-Evaluations

**13** Kenny A Placements (none pending review)

**12** Overdue Re-evaluations pending OPM review

**92** overdue Re-evaluations remain outstanding

(homes that were due since December 2022).

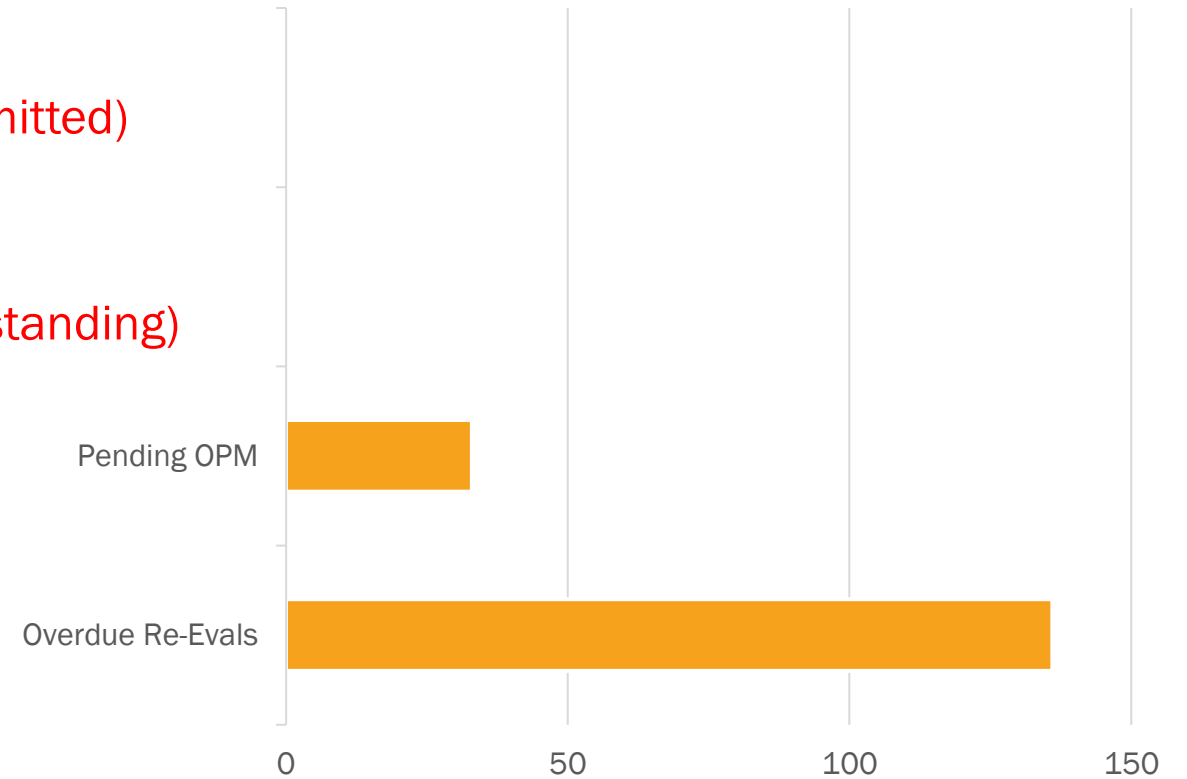


# Unapproved Re-evaluations March 2023

**169** Overdue Re-Evaluations (136 that aren't submitted)

**17** Kenny A Placements (3 pending review) (14 outstanding)

**33** Re-evaluations pending OPM review



# Outstanding Foster Home Re-Evaluations

---

59 outstanding homes that are over 90 days

3 (due in 2021)



# Barriers

---

Outside of pending PVA's and CPS screens; what are the barriers of submitting foster homes timely?



# Policy Reminders



The annual re-evaluation must be completed prior to the expiration of the current foster home approval period. i. No home shall have more than 12 months of approval (e.g., the re-evaluation for a foster home approved 01/10/2019 is due by 12/31/2019).



ii. If a re-evaluation is completed within 30 calendar days of the due date, then the approval term (starting month to ending month) and re-evaluation date will remain the same as it was previously.



iii. If the re-evaluation is completed more than 30 calendar days early or late, then the approval term and re-evaluation date must change

**HAVE QUESTIONS,  
COMMENTS OR  
CONCERNS?**



# Recruitment and Retention Plan Policy 14.6

- Recruit based on child specific needs
- Onboard families who can meet the needs of our youth based on the specified needs list : medically fragile, LGBTQIA, teens and sibling groups
- Utilize targeted recruiting based on regional and state needs data
- Use non-discriminatory practices when recruiting families
- Retain homes by considering the level of foster parent satisfaction (Routine Surveys)
- Conduct exit interviews with families leaving your program
- Ensure the caregivers are aware of the grievance process
- Develop respite partnerships
- Offer ongoing foster parent trainings, support groups and meetings (AFPAG)
- Establish a procedure for placement disruptions. Clarify expectations to facilitate a smoother transition to all parties

# CPA Home Availability

<b>Homes by Available Bed Space</b>			
Status	Homes w/ Available Beds	Homes w/o Available Beds	(Notes)
Approved	1605	584	Count of homes without available beds includes 12 foster homes that are currently over capacity.
Unapproved or On Hold	248	78	Count of homes without available beds includes 2 foster homes that are currently over capacity.
N/A (Reopening home)	0	14	Count of homes in the process of reopening with a re-evaluation; they're unapproved and may not have capacity or placement data yet.
* <i>"Available beds" = [Approved Spaces] - [current placement count]. It doesn't factor in age/gender/child needs or other considerations.</i>			
<b>Homes by Age Accepted (all homes)</b>			
Status	Homes accepting Girls 11+	Homes accepting Boys 11+	Any gender 11+
Approved	1607	1651	1777
Unapproved or On Hold	252	251	276
*14 homes in the process of reopening via re-evaluation have no age range yet and aren't being counted here.			
<b>Homes by Age Accepted (only homes with available beds)</b>			
Status	Homes accepting Girls 11+	Homes accepting Boys 11+	Any gender 11+
Approved	1197	1235	1324
Unapproved or On Hold	188	187	206
*14 homes in the process of reopening via re-evaluation have no age range and aren't being counted here.			

# Homes that accept MWO Program Designations

---

## Homes by Age Accepted (only homes with available beds)

Status	Homes accepting Girls 11+	Homes accepting Boys 11+	Any gender 11+
Approved	1197	1235	1324
Unapproved or On Hold	188	187	206

\*14 homes in the process of reopening via re-evaluation have no age range and aren't being counted here.

## Homes Approved for MWO (all homes)

Status	All homes	Homes accepting Girls 11+	Homes accepting Boys 11+	Any gender 11+
Approved	2000	1480	1518	1639
Unapproved or On Hold	259	201	205	222

## Homes Approved for MWO (only homes with available beds)

Status	All homes	Homes accepting Girls 11+	Homes accepting Boys 11+	Any gender 11+
Approved	1573	1181	1217	1310
Unapproved or On Hold	194	169	170	186

QUESTIONS





# Complex Youth Placement



QUESTIONS





# Argo Placement Tool

CPS  
Screening  
Application –  
Follow Up





**REMINDER**

# Autism Awareness Training Deadline June 2023

---

## MANDATORY VIDEO TRAINING

All private agency case managers and foster parents must view the video and report completion to GA+SCORE.

- Case manager video: <https://vimeo.com/772820564>
- Foster parent video: <https://vimeo.com/773350891/babfddf928>

The video does not have a certificate. To show that it was completed, follow the normal process for documenting annual training hours in your records and in GA+SCORE: the purple Profile >> Annual Training screen for staff or green Members >> Annual Training screen for foster parents.

# RBWO Minimum Standard Admission 4.3 & 4.4

---

4.3 Providers will give DFCS notice of its decision to accept or reject referrals upon receipt of completed admissions packet as soon as possible, but no longer than two calendar days. Placement of children accepted for admission should occur as soon as possible or within a timeframe negotiated with the DFCS case manager.

4.4 For children referred by Fulton or DeKalb County, these admission decisions must be made via written notice within 8 hours of the referral. For children admitted, they must be placed within 23 hours of the approved admission.

# Provider Partnership Reminders

---

1. Refer to the SAFE Matrix and Policy 14.10 for guidance on uploading the applicable forms. Under the Narrative tab in GA SCORE, upload the original assessment, subsequent assessments obtained by the prior agency, and your agency's SAFE Update.
2. If the family has fostered more than 3 years complete a review of IMPACT and your agency operation with the family.
3. Assess the caregiver's motivation for wanting to transfer and create a plan for addressing prior agency feedback.
4. Utilize SAFE PSI Update guidelines and if you require further clarification or have questions, please call SAFE Consortium at: 415-491-2200 or use the "Contact Us" tab on [www.SAFEHomeStudy.org](http://www.SAFEHomeStudy.org).

## Helpful Resources

- ODIS <https://odis.dhs.ga.gov/General>
- RBWO minimum standards  
[https://www.gascore.com/documents/FY23\\_RBWO\\_Minimum\\_Standards\\_update.pdf](https://www.gascore.com/documents/FY23_RBWO_Minimum_Standards_update.pdf)
- SAFE website  
<https://www.safehomestudy.org/>
- OPM RD team



Questions







Monthly Recognition



Agencies at 100% Approved Homes  
In the month of March 2023

- Camp Rock
- Cherish All God's Children
- Community Connection
- Families 4 Families
- Foster Love Ministries
- Georgia Baptist Children's Home & Family Ministry
- Goshen Valley
- Health Connect America
- Inspiritus Inc.
- Meritan
- Normal Life
- Raintree Village
- Trinity J and D
- Winshape

**REST AND SELF-CARE ARE SO IMPORTANT. WHEN YOU TAKE TIME TO REPLENISH YOUR SPIRIT, IT ALLOWS YOU TO SERVE FROM THE OVERFLOW. YOU CANNOT SERVE FROM AN EMPTY VESSEL.**

**– ELEANOR BROWN**



Quote of the Month

# Suggestions

- OPM RD TEAM would love your feedback and suggestions.
- Regarding Kinship Family Onboarding
- Adoption Consideration and Signing Process
- Please send information to [opm.leadership@dhs.ga.gov](mailto:opm.leadership@dhs.ga.gov)

*feedback*

*we listen*